



Paragon of Innovation

Company Profile

Table of Contents

1. Vision & Mission	2	7. Tourism	
2. Core Values	3	■ JSK Borneo Reef	28, 29
3. Profile	4 - 5	■ JPOD Capsule Hotel	30, 31
4. Message from Managing Director	6	■ JSK Mantanani Island Resorts	32, 33
5. Residential & Commercial	7	■ Island Daycation	34
■ The Early Years	8 - 11	■ Kawa-Kawa River Cruise	34, 35
■ JSK Studios	12, 13	■ JSK Tours & Travel	36, 37
■ Union Tower	14, 15	■ JSK Fruit Farm & JSK Farm	38
■ The Residence & The Purple Bamboo Court	16 - 19	■ 4 Star Resort at Beringis Beach	39, 40
■ Future Projects	20	8. Corporate Social Responsibility (CSR)	41 - 44
6. Manufacturing	21		
■ W Clay Industries	22 - 26		

The JSK Group of Companies was formed with three elements in mind –

J OY

S ATISFACTION

K EY

JSK strives to provide the Key to its customers' Joy and Satisfaction by adopting creative ideas and groundbreaking solutions.

*“Paragon
of
Innovation”*

VISION

- To foster innovation and break barriers in our field.
- To pave the way for dreamers to exceed their potential.

MISSION

- To be the leading organisation in the development, tourism, and manufacturing sectors.
- To provide customers with first-class services and products.

CORE VALUES

JSK



01.

INNOVATION

We are determined to create an environment that fosters new ideas and modern solutions.



02.

EFFICIENCY

We believe that productivity and punctuality are bedrocks of a successful company.



03.

INTEGRITY

Trust and honesty are the main canons of our organisation.



04.

ACCOUNTABILITY

Failure is not an option. We alone are responsible for our actions.



05.

TEAMWORK

We acknowledge unity as the main foundation of a solid institution.



06.

PROFESSIONALISM

We believe that the attitude and mindset of our staff are the reflection of our company's stature.



JSK Profile

The dream to revolutionise the local property sector was first envisioned in the 1950s when the W Group (previously known as the Wong Kwok Group) was formed by the late Datuk Seri Panglima Dr. Wong Kwok.

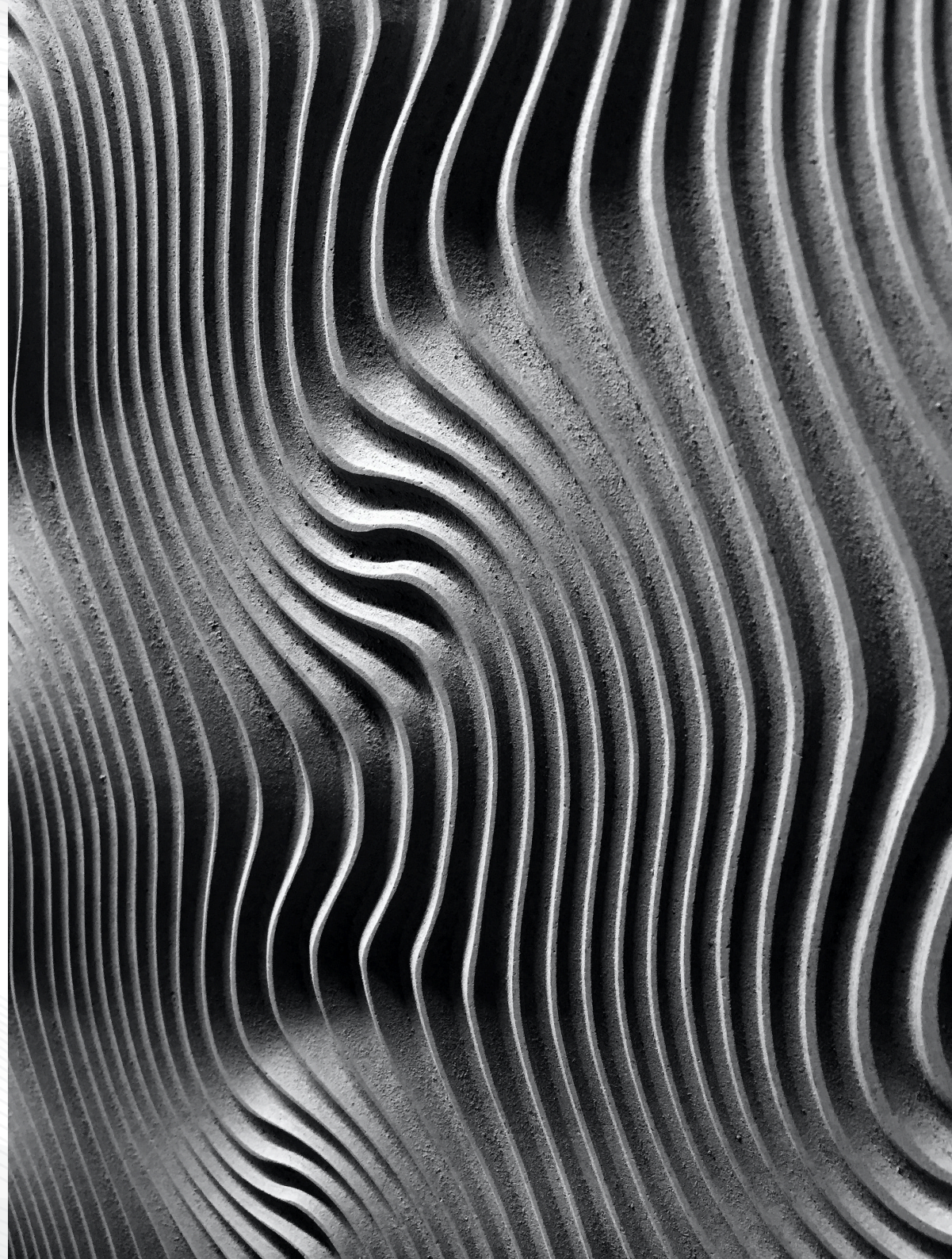
Over the past seven decades, the W Group has grown to be a household name in the property, construction, manufacturing, trading, and services sectors.

Datuk Johnny Wong Chen Yee, who is the son of Wong Kwok, successfully built more than 16,000 apartment units under the W Group.

With a wealth of experience under his belt, Datuk Johnny formed the JSK Group of Companies in 2013 to realise his dream of penetrating the global market and venturing into the tourism industry.

The company's first international project was JSK Studios, a 65-unit student apartment building located in the heart of Newcastle Upon Tyne, United Kingdom, which was completed in 2015.

In 2018, JSK Group expanded to Australia with the completion of Union Tower, a 35-storey building equipped with 165 one and two-bedroom apartments, located in the heart of Melbourne's CBD. This was soon followed by another prestigious project in the suburbs of Camberwell, located North of Melbourne's CBD.





These accomplishments have inspired JSK Group to reach greater heights by entering the China property market with the completion of The Residence, a 618-unit apartment building in the ancient city of Xuyi in the Jiangsu Province as well as the ongoing Purple Bamboo Court project, a 1,200-unit apartment building.

To ride on this momentum, JSK Group will soon be launching a Land Property Housing Project in its home state of Sabah, along with several other local and international projects.

In the manufacturing sector, JSK Group, through The W Clay, has sold its state-of-the-art bleaching clay to clients from Europe, the USA, the Middle East, Africa, and the Oceania regions.

Today, W Clay is the fifth largest bleaching clay manufacturer in the world, with plants in Port Klang, Pasir Gudang, and Xuyi, China as well as warehousing and bulk tanker facilities in Rotterdam in the Netherlands, and Kotabaru in Kalimantan, Indonesia.

JSK Group is actively looking for more manufacturing opportunities in other parts of the world.

JSK Group has also made its mark in the tourism sector through its tour agencies, hotels, resorts, water activities, and more – therefore catering to the needs of local and international tourists.

Our products include JSK Borneo Reef, the largest reef activity pontoon in South East Asia; JPOD Capsule Hotel, Asia's largest capsule hotel; JSK Tours and Travel; JSK Mantanani Island Resort; Kawa-Kawa River Cruise; and more.

To expand our presence in the tourism sector, JSK Group will be launching a 4-star Resort Hotel and Water Theme Park at Beringis Beach along with several other resort projects in the pipeline.

Despite these achievements, the JSK Group is determined to look for more local and international business opportunities – not for its own benefit but for the greater good of the nation's economy.

Message from the Managing Director

As the Managing Director of the JSK Group, I would like to sincerely thank you for your support all these years.

Without your support, the JSK Group as well as the W Group would not have succeeded in their endeavours.

During my time in the W Group, I have built more than 16,000 apartment units in Sabah – a feat that would not have been possible without the support from all our customers.

Under the JSK Group, we have realised our dream of penetrating the global market with successful projects in the UK, Australia, and China.

We have always held to our belief that owning property is a basic human need. A home is where our most precious memories are created and where families are made.

Everybody wants their home to be as comfortable, practical, and secure as possible. Therefore, it is only right for us to grant you these qualities.

We are determined to expand our property business by building more affordable and high-quality homes, both locally and internationally.

We would also like to express our gratitude to our friends in the manufacturing sector for believing in The W Clay and making us the fifth largest bleaching clay manufacturer in the world.

We hope that you will continue to believe in our products.

Last but not least, the JSK Group would like to thank our friends in the tourism sector for your faith in our products.

We are in the midst of developing more tourism products to cater to the needs of the local and international tourists.

The JSK Group will be opting for a more dynamic expansion plan as the next chapter of our journey unfolds.

We look forward to strengthening existing partnerships and forging new friendships.

This is only the beginning.



Managing Director

Datuk Johnny Wong Chen Yee P.G.D.K



Residential & Commercial

- The Early Years
- JSK Studios
- Union Tower
- The Residence & The Purple Bamboo Court
- Future Projects

THE EARLY YEARS

The W Group was a pioneer in the development of affordable housing in Sabah with the construction of



16,618
apartment units

in vast developing residential and business hubs throughout the state.



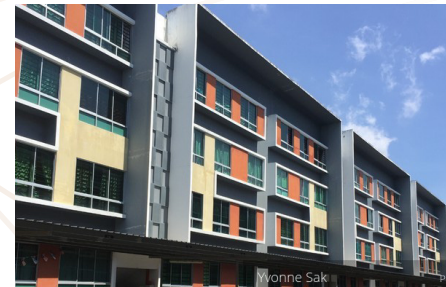
Country Heights



University Apartment 1 & 2



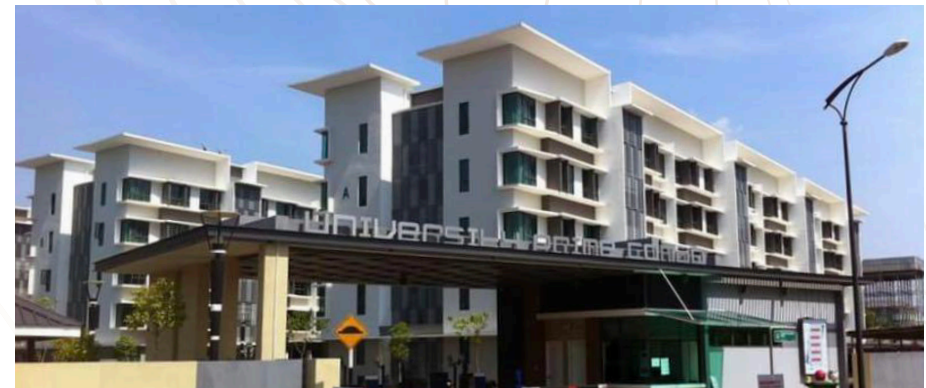
University Condo Apartment 2



Cyber City Apartment 1 & 2



Cyber Square



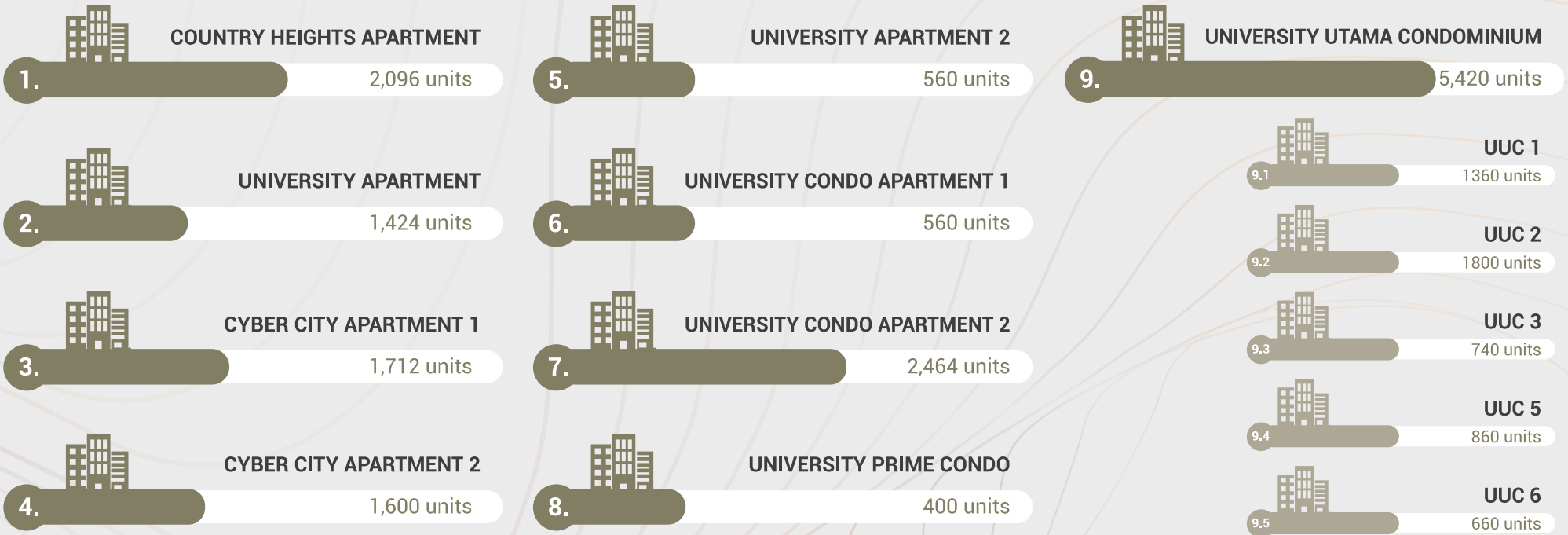
University Prime Condo



University Utama Condominium

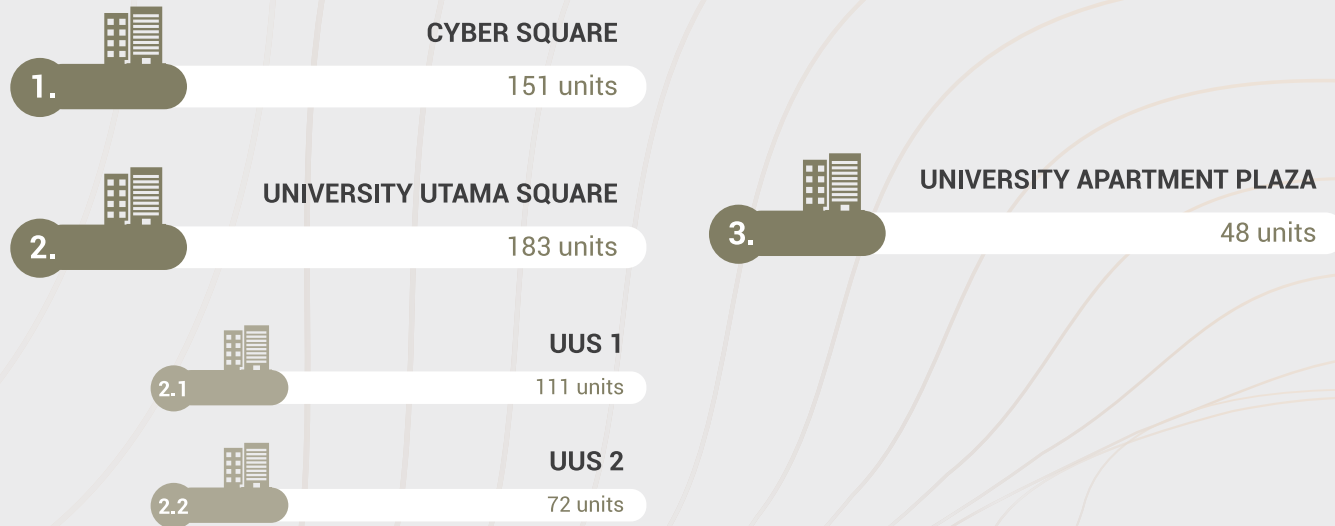
Notable Projects *in the early years include:*

RESIDENTIAL:



Notable Projects *in the early years include:*

COMMERCIAL:





Newcastle, UK

JSK STUDIOS

📍 Newcastle, United Kingdom

Completed in October 2015, JSK Studios was JSK Group's first project in the UK.

JSK Studios is a **65-unit student apartment** building, located in the heart of Newcastle Upon Tyne that boasts ample space, efficient security, and numerous facilities.

It complements the historic city, which is the home of Newcastle University and Northumbria University - two of the UK's most prestigious universities.

JSK Studios also integrates seamlessly with the upbeat and vibrant Newcastle. Transportation links, shops, restaurants, bars, entertainment centres are all just a stone's throw away.



JSK STUDIOS



Cozy room



Studio Concept



Union Tower

UNION TOWER

📍 Melbourne, Australia

Completed in October 2018, Union Tower is a **35-storey building** with **165 one and two-bedroom apartments**. It is located in the heart of Melbourne's CBD – the ultimate mid-city location.

Encompassing modern and unique architecture, the Union Tower exudes a sophisticated and contemporary vibe that gives a new meaning to the simple pleasures of life.

JSK Group is determined to have a long-term presence in the Australian property market and is already exploring new opportunities in the prestigious suburb of Camberwell, north of Melbourne's CBD – the home of tranquil tree-lined streets, historic buildings, and stunning views.



Apartment A



Sky Lounge



Apartment Bedroom



Hub



THE RESIDENCE & THE PURPLE BAMBOO COURT

📍 Xuyi, China

In 2018, JSK entered the China property development market with the construction of The Residence – a **618-unit apartment building** in the ancient city of Xuyi in the Jiangsu Province, near Nanjing City.

Inspired by Xuyi's historical architecture, The Residence pays homage to the city's Ming Dynasty roots while also adding subtle touches of modern sophistication to appeal to the city's younger generation. The city is also famed for its crayfish production.



Residential & Commercial
The Purple Bamboo Court



This was followed shortly after in 2020 by another project launch called **the Purple Bamboo Court** – a **1,238-unit apartment building** that is divided into 15 blocks.

Designed with a blend of historical architecture with a dash of natural surroundings and modern sophistication, the project is destined to be another proud milestone for JSK.

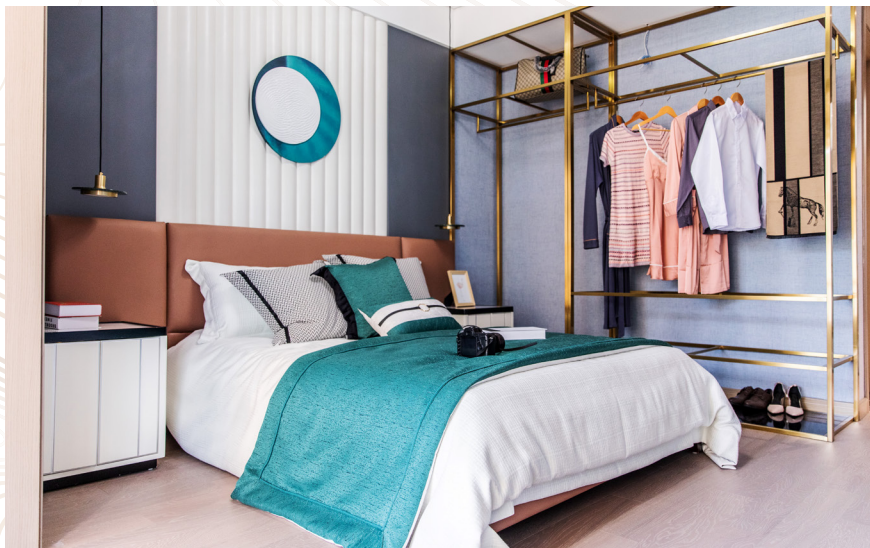
Construction began on May 18, 2020, and is expected to be completed by 2024.



Showroom



Lobby



Sample Bedroom



Sample Bedroom

FUTURE PROJECTS

JSK Group is in the midst of planning a Land Property Housing Project in Telipok, Sabah. The state-of-the-art project is expected to elevate the property market in Telipok, a developing town located just 15 kilometres away from the Kota Kinabalu city centre.



OTHER FUTURE PROJECTS

JSK Group is all about embracing challenges and unlocking opportunities. There are several other monumental local and international projects on the way. The best is yet to come.





Manufacturing

W CLAY INDUSTRIES



The W Clay is one of the fastest-growing bleaching clay companies in the world.

W Clay started its business as a small domestic producer. Today it has grown and now owns four manufacturing plants across China and Malaysia

with a total capacity of above
250,000 mts
per year





5TH LARGEST MANUFACTURER





Its rapid growth in the bleaching earth sector was initially encouraged by oil refineries in and around the Asian regions. Now, orders are flying in from Europe, the USA, the Middle East, Africa, and the Oceania regions.

With the setting up of more plants in **Port Klang, Pasir Gudang, and Xuyi Jiangsu China**; as well as warehousing and bulk tanker facilities in **Rotterdam, Netherlands and Kota Baru, Kalimantan, Indonesia** – our dream of reaching excellence in research and development, quality control, and traceability is turning into reality.



OUR FACTORIES



 Sandakan
Sabah, Malaysia



 Port Klang
Selangor, Malaysia



 Pasir Gudang
Johor, Malaysia



 Xuyi Jiangsu
China

DISTRIBUTION WAREHOUSE



📍 Rotterdam, Netherlands



📍 Kalimantan, Indonesia



Tourism

- JSK Borneo Reef
- JPOD Capsule Hotel
- JSK Mantanani Island Resorts
- Island Daycation
- Kawa Kawa River Cruise
- JSK Tours & Travel
- JSK Fruit Farm & JSK Farm
- 4 Star Resort at Beringis Beach



JSK Borneo Reef

The JSK Borneo Reef is a newly launched reef activity pontoon, located within the Tunku Abdul Rahman Marine Park and adjacent to neighbouring islands, Pulau Gaya and Pulau Sapi.

With its stunning untouched reefs and coral gardens which are rich in marine life, JSK Borneo Reef is the perfect destination for all types of sea sports and activities such as snorkelling and kayaking. The pontoon has a one-of-a-kind inflatable water park and an underwater observatory tunnel - creating a fun and unique experience for visitors of all ages.

Floating majestically at 12 meters high, 37.5 meters long, and 24.5 meters wide, our reef activity pontoon is the largest in South East Asia and can accommodate 300 people comfortably.







JPOD Capsule Hotel

If comfort and privacy are what you're looking for, then JPOD Capsule Hotel is the perfect place for you.

As Asia's largest capsule hotel, JPOD boasts 296 spacious, private, and air-conditioned capsules – promising you that night of uninterrupted sleep that you so rightly deserve.

Strategically located in the heart of Kota Kinabalu city, our hotel is conveniently located near shopping malls, restaurants, and local attractions.

Encapsulating a mix of local yet modern interiors, our boutique-style accommodation also offers state-of-the-art facilities such as private lockers, co-working spaces, complimentary breakfasts, Wi-Fi, housekeeping services, and many more.







JSK MANTANANI
ISLAND RESORTS

JSK Mantanani Island Resorts

There is no better way to experience the pristine beauty and hidden treasures of Mantanani Island than a holiday at JSK Mantanani Island Resort – your tropical oasis. Our sandy beaches, emerald waters, and azure skies are perfect for those wishing to escape from the hustle and bustle of the city.

With 12 aesthetic Deluxe Rooms (and more underway) to choose from, our resort is perfect for all types of guests – be it as a solo traveler, family, or a group.

Explore the scenic points of the island such as the Dragon's Tail, Lingisan Cave, Mantanani Kecil, Blue Tears, Corals, our mesmerising sunset view, and more!

You may also engage in a game of water sport of your choice on our inflatable water park or opt for something more exhilarating by going kayaking or snorkeling.







Island Daycation and Kawa-Kawa River Cruise

Explore the natural wonders of Mantanani Island with our Island Daycation Package – a fun-filled day trip that guarantees an all-inclusive tour of the Mermaid Island!





Explore the mystifying wetland of Kawa-Kawa with our breathtaking Kawa-Kawa River Cruise.

Or even better, go for both by opting for our Twin Excursion Package!



JSK Tours & Travel

In a bid to showcase Sabah's natural wonders to a larger audience, JSK Group formed JSK Tours and Travel – a licensed tour operator which has since made its mark in the tourism sector.

Specialising in tours, excursions, and exhilarating activities, JSK Tours and Travel only has one goal in mind– to create lasting memories for its customers.

Explore the renowned landmarks and the hidden gems of Sabah with our comprehensive tour packages.





JSK Farm and JSK Fruit Market

At JSK Farm, our tropical fruits grow in abundance. On top of recreational amenities, our farm also offers an educational fruit tour, which introduces the wonders and flavours of Malaysian fruits to our local and foreign visitors.

Fruits from the farm are harvested and supplied fresh to the JSK Fruit Market outlets. We ensure that our customers will enjoy our top-quality produce.





Upcoming 4-Star Resort at Beringis Beach

JSK's upcoming resort hotel and water theme park development at Beringis Beach is set to offer a four-star international hospitality and recreation experience for a fun and relaxing tropical getaway.





A close-up photograph of several hands of different skin tones and ages being stacked together in a circle. The hands are positioned in a way that suggests a team huddle or a gesture of solidarity. The lighting is warm and focused on the hands, with a dark, blurred background. The overall mood is one of collaboration and shared purpose.

Corporate Social Responsibility

CSR

LOVE

Lifting Others Valuing Equity

JSK is committed to playing its role as an ethical, socially conscious, and corporately responsible organisation. To the best of our individual abilities and corporate capacity, we pledge to fight for:

- The needs of the underprivileged
- Education development
- Disaster reliefs





1 Jun 2020 Children's Day for Xuyi County Development Zone, Experimental Primary School



Don Bosco Children Home Bundu Tuhan



Emmanuel Homes Kudat



Mother of Divine Grace



Holy Family Residence

